

N 1/4 COR SEC 5, T 17N, R 62W

062631

RECEIVED  
LARAMIE COUNTY  
CHEYENNE, WY.

CERTIFIED LAND CORNER RECORDATION '89 OCT 5 PM 3 00

DESCRIPTION OF CORNER EVIDENCE FOUND, AND ORIGINAL RECORD (If known)

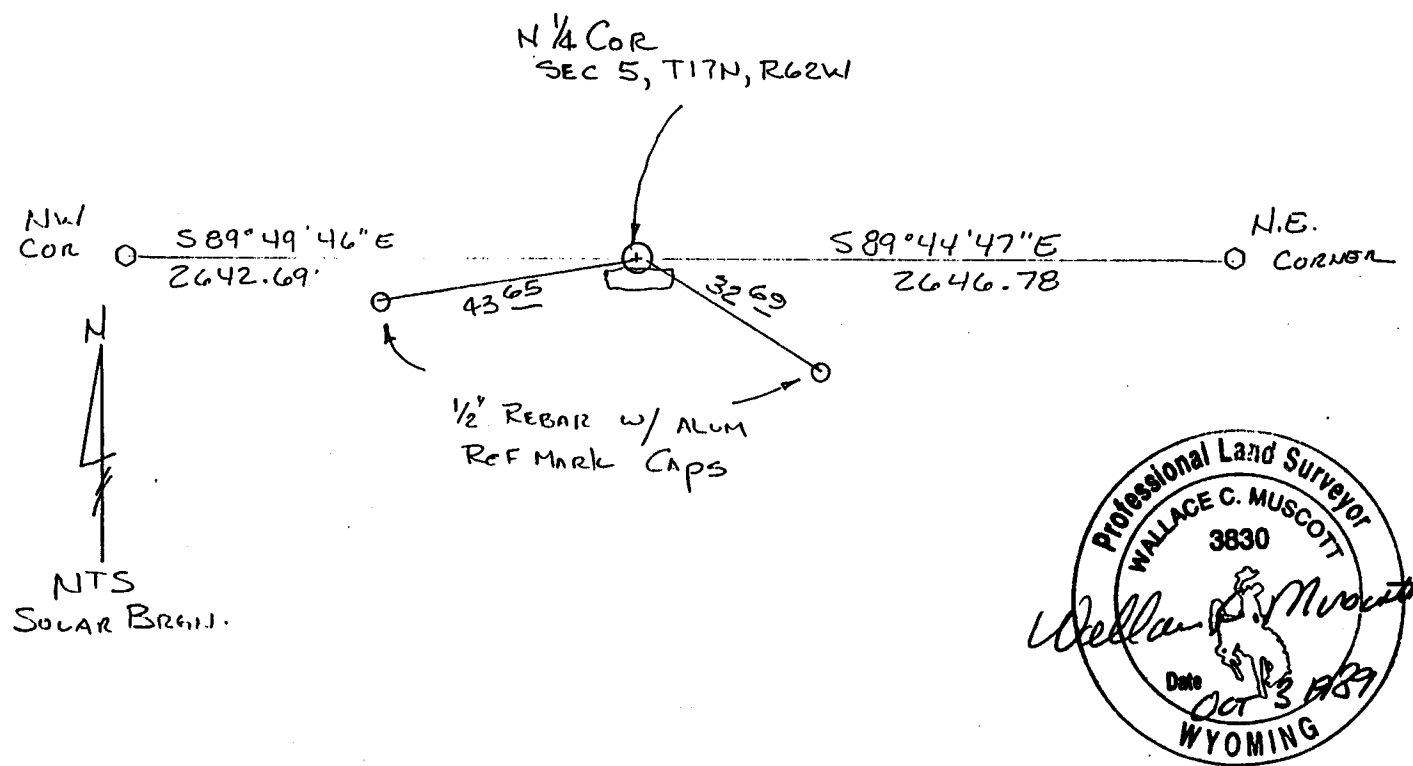
FOUND ORIG. LIMESTONE COR. 15" x 10" x 4" w/ 1/4 CHISELED  
IN NORTH SIDE. FIRMLY PLANTED, HELD THE FOUND STONS.

DESCRIPTION OF MONUMENT AND ACCESSORIES ESTABLISHED  
TO PERPETUATE THE ORIGINAL LOCATION OF THIS CORNER:

IN PLACE OF ORIG STONE, SET A 5/8" x 30" REBAR w/ CORPS  
OF ENGINEERS BRASS CAP AT TOP, PLACED ORIG. STONE ALONG  
SOUTH SIDE & RAISED A MOUND OF STONE. REFERENCED AS  
SHOWN BELOW.

AUG 3 1989

SKETCH, WITH COURSE AND DISTANCE TO ADJACENT CORNER IF DETERMINED IN THIS SURVEY.  
(May Sketch or Paste Reproduction on Reverse Side.)



I, Wallace C. Muscott certify that I have carefully performed or reviewed the work  
done on the diagrammed corner as reported on this recordation form and approve the same.

Wallace C. Muscott 3830  
Signature of Surveyor Registration No.

STATE OF WYOMING,  
Office of Clerk and Recorder,  
County of \_\_\_\_\_

This "corner record" was filed for record on the \_\_\_\_\_ day of \_\_\_\_\_, 19\_\_\_\_, was noted  
on the cross-index plat and is assigned page No. \_\_\_\_\_, in book No. \_\_\_\_\_.

County Official			
Cross Index No. <u>A-7</u>	T. <u>17N</u>	R. <u>62W</u>	Mer.
<u>Z-7</u>	T. <u>18N</u>	R. <u>62W</u>	Mer.
_____	T. _____	R. _____	Mer.
_____	T. _____	R. _____	Mer.
_____	T. _____	R. _____	Mer.
_____	T. _____	R. _____	Mer.
_____	T. _____	R. _____	Mer.